



# The Patterson

BY MOSAIC

A new, sophisticated  
way of life on the  
Brisbane River's edge.



# The Patterson

BY MOSAIC

3 ARCHER STREET, TOOWONG  
COMPLETED MARCH 2023



# The Patterson

BY MOSAIC



# Welcome to The Patterson by Mosaic



The Patterson by Mosaic is a magnificent fusion of spectacular architectural form, incredible amenity, and beautiful living spaces that take full advantage of an elevated, riverside location.

Add to this, a position on the doorstep of the very best Brisbane has to offer, this flawless collection of residences is a true address of distinction – the ultimate in effortless luxury.

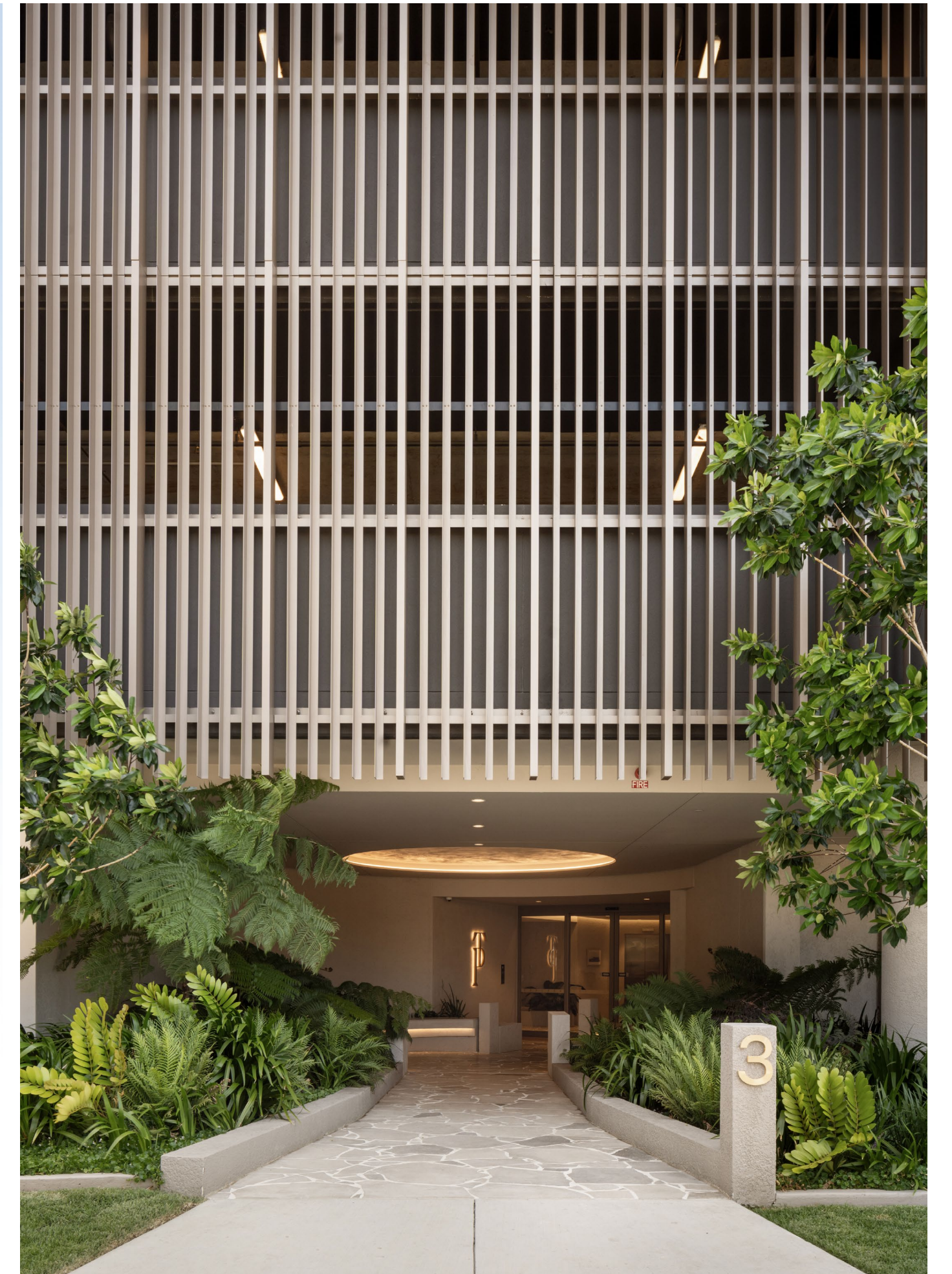
Our commitment to quality and craftsmanship comes to the fore with The Patterson. No expense is spared to create homes that feel as good as they look, in what is an exceptional, blue-chip location, rich in character and history.

We feel very fortunate to have the opportunity to bring this vision to life and provide a lasting legacy that delivers enduring value to the local community and the people that reside there.

BROOK MONAHAN, FOUNDER & MANAGING DIRECTOR  
MOSAIC PROPERTY GROUP







A ground-floor food  
and beverage offering  
to nurture community.











State-of-the-art  
gymnasium for health  
and wellness needs.









Abundantly rich in  
lifestyle amenity with  
panoramic views.













Spacious and thoughtfully  
crafted living spaces  
exemplify a commitment to  
quality and authenticity.







Generous balconies  
designed to take advantage  
of views from the prime  
riverside location.

















mosaic  
PROPERTY GROUP

enduring  
value®