

The Patterson

3 Archer Street, Toowong

Operation and Maintenance Manual Format

Table of Contents

Section 1 Company Information

- *John Comino / Cardell Manufacturing, 61 Pickering Street, Enoggera Qld 4051*
- *07-3034 1051 / showroom@cardell.net.au*

Section 2 Description of the Works

- *Manufactured and Installed Roller Blinds and Curtains*
- *Chain Operated and Motorised Roller Blinds, Essentials col Peppercorn Blockout Fabric*
- *Sheer Curtains, Fabric Vevey col Smoke, Custom Made Hand operated tracks col White*

Section 3 Operation & Maintenance Procedures – (Pages 2-5)

- *Detailed instruction of the operation of the system / works*

Section 4 Manufacturers Literature (Page 6)

- *Manufacturer's product information / data sheets / materials safety data sheets etc*

Section 5 Warranties

- *12 Months – Roller Blinds*
- *12 Months – Curtains and Tracks*
- *5 years – Roller Blind Motors*

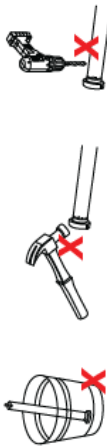
Section 6 Certification

- *N/A*

Section 7 As Built Drawings (if applicable)

- *N/A*

WARNING: Important safety instructions to be read before installation.
Incorrect installation can lead to serious injury and will void manufacturer's liability and warranty.



CAUTION

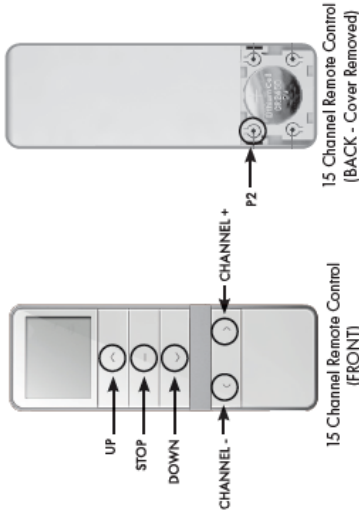
- Do not expose to moisture or extreme temperatures.
- Do not allow children to play with this device.
- Use or modification outside the scope of this instruction manual will void warranty.
- Installation and programming to be performed by a suitably qualified installer.
- For use within tubular blinds.
- Ensure correct crown and drive adaptors are used for the intended system.
- Keep antenna straight and clear from metal objects.
- Do not cut the antenna.
- Do not expose the motor to water or install in humid or damp environments.
- Motor is to be installed in horizontal application only.
- Do not drill into motor body.
- The routing of cable through walls shall be protected by isolating bushes or grommets.
- Ensure power cable and aerial is clear and protected from moving parts.
- If cable or power connector is damaged - do not use.

IMPORTANT SAFETY INSTRUCTIONS TO BE READ PRIOR TO OPERATION

- It is important for the safety of persons to follow the enclosed instructions. Save these instructions for future reference.
- Persons (including children) with reduced physical, sensory or mental capabilities, or lack of experience and knowledge should not be allowed to use this product.
- Keep remote controls away from children.
- Frequently inspect for improper operation. Do not use if repair or adjustment is necessary.
- Keep motor away from acid and alkali.
- Do not force the motor drive.
- Keep clear when in operation.



REMOTE CONTROL BUTTONS



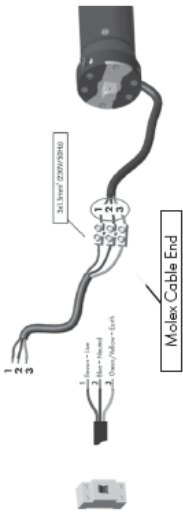
INDEX:
Buttons will be displayed throughout this manual as below:





INTRODUCTION

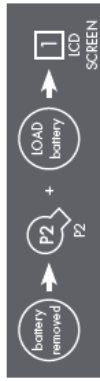
Ensure blind is installed with power lead pointing towards the ground - otherwise water will run into the motor.



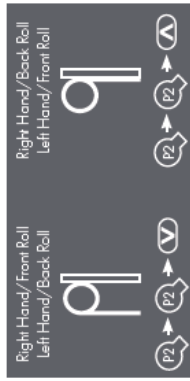
*Ensure blind is installed with power lead pointing towards the ground - otherwise water will run into the motor.



INITIAL SET-UP



*If you have purchased an MTM blind from Windoware, the remote control has been preset with the correct settings and this step can be ignored.



REMOTE MUST BE IN "MODE 2"

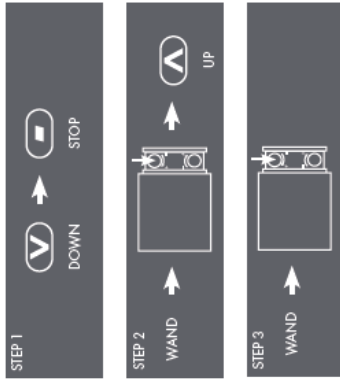
- 1) Remove the battery from the remote.
- 2) Hold down the P2 button on the remote whilst loading the battery.
- 3) The LCD screen shows "1"

- 1) Ensure motor is OFF.
- 2) Select the correct channel.
- 3) Motor will make 1x long beep.

ESTABLISH THE PREFERRED MOTOR SIDE & DIRECTION OF THE ROLL

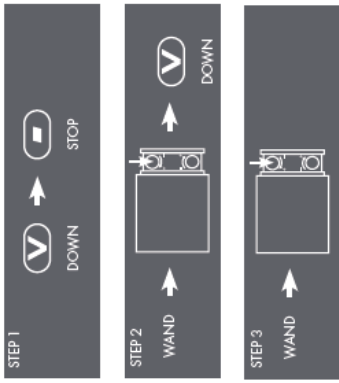
- 1) Remove the battery from the remote.
- 2) Hold down the P2 button on the remote whilst loading the battery.
- 3) The LCD screen shows "1"

SETTING LIMITS



- UPPER Right Hand Control & Front Roll**
- STEP ONE**
- 1) Press the DOWN button on the remote to lower the blind halfway down the window.
 - 2) Press the STOP button to stop the blind moving.
- STEP TWO**
- 1) Using the provided wand, wind the wand anti-clockwise for approximately 15 revolutions.
 - 2) Press the UP button on the remote and the blind should not move.
- *If the blind does move, press the STOP button and wind the wand anti-clockwise until the blind stops.
- STEP THREE**
- 1) Turn the wand clockwise slowly, until the blind starts moving up.
 - 2) Stop winding the wand when the desired highest position has been reached. Upper limit is now set.
- *Do not press any buttons on the remote.

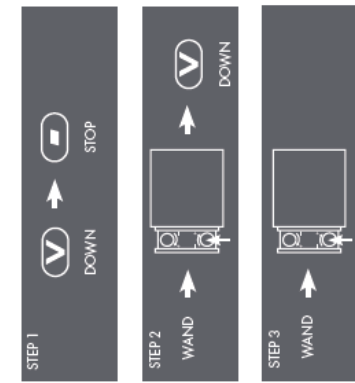
LOWER Right Hand Control & Front Roll



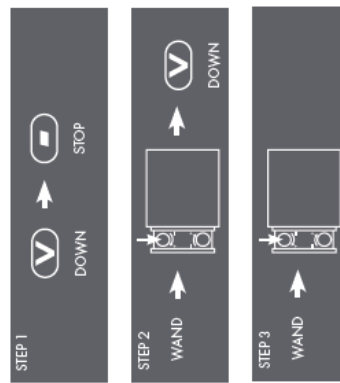
- LOWER Right Hand Control & Front Roll**
- STEP ONE**
- 1) Press the DOWN button on the remote to lower the blind halfway down the window.
 - 2) Press the STOP button to stop the blind moving.
- STEP TWO**
- 1) Using the provided wand, wind the wand anti-clockwise for approximately 15 revolutions.
 - 2) Press the DOWN button on the remote and the blind should not move.
- *If the blind does move, press the STOP button and wind the wand anti-clockwise until the blind stops.
- STEP THREE**
- 1) Turn the wand clockwise slowly, until the blind starts moving up.
 - 2) Stop winding the wand when the desired highest position has been reached. Upper limit is now set.
- *Do not press any buttons on the remote.



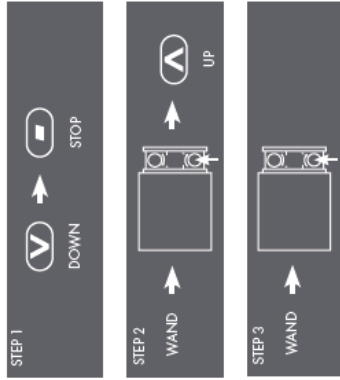
SETTING LIMITS continued



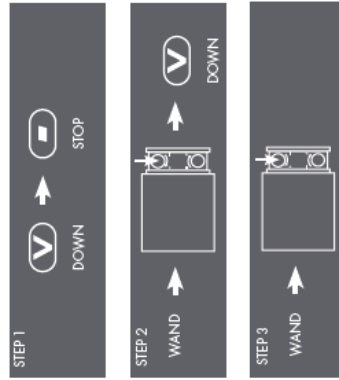
UPPER Left Hand Control & Back Roll
STEP ONE
 1) Press the DOWN button on the remote to lower the blind halfway down the window.
 2) Press the STOP button to stop the blind moving.
STEP TWO
 1) Using the provided wand, wind the wand anti-clockwise for approximately 15 revolutions.
 2) Press the UP button on the remote and the blind should not move.
 *If the blind does move, press the STOP button and wind the wand anti-clockwise until the blind stops.
STEP THREE
 1) Turn the wand clockwise slowly, until the blind starts moving up.
 2) Stop winding the wand when the desired highest position has been reached. Upper limit is now set.
 *Do not press any buttons on the remote.



LOWER Left Hand Control & Back Roll
STEP ONE
 1) Press the DOWN button on the remote to lower the blind halfway down the window.
 2) Press the STOP button to stop the blind moving.
STEP TWO
 1) Using the provided wand, wind the wand anti-clockwise for approximately 15 revolutions.
 2) Press the DOWN button on the remote and the blind should not move.
 *If the blind does move, press the STOP button and wind the wand anti-clockwise until the blind stops.
STEP THREE
 1) Turn the wand clockwise slowly, until the blind starts moving up.
 2) Stop winding the wand when the desired highest position has been reached. Upper limit is now set.
 *Do not press any buttons on the remote.



UPPER Right Hand Control & Back Roll
STEP ONE
 1) Press the DOWN button on the remote to lower the blind halfway down the window.
 2) Press the STOP button to stop the blind moving.
STEP TWO
 1) Using the provided wand, wind the wand anti-clockwise for approximately 15 revolutions.
 2) Press the UP button on the remote and the blind should not move.
 *If the blind does move, press the STOP button and wind the wand anti-clockwise until the blind stops.
STEP THREE
 1) Turn the wand clockwise slowly, until the blind starts moving up.
 2) Stop winding the wand when the desired highest position has been reached. Upper limit is now set.
 *Do not press any buttons on the remote.



LOWER Right Hand Control & Back Roll
STEP ONE
 1) Press the DOWN button on the remote to lower the blind halfway down the window.
 2) Press the STOP button to stop the blind moving.
STEP TWO
 1) Using the provided wand, wind the wand anti-clockwise for approximately 15 revolutions.
 2) Press the DOWN button on the remote and the blind should not move.
 *If the blind does move, press the STOP button and wind the wand anti-clockwise until the blind stops.
STEP THREE
 1) Turn the wand clockwise slowly, until the blind starts moving up.
 2) Stop winding the wand when the desired highest position has been reached. Upper limit is now set.
 *Do not press any buttons on the remote.



TROUBLESHOOTING

PROBLEM	CAUSE	REMEDY
Motor is not responding.	Remote battery is discharged.	Replace battery.
	Battery is inserted incorrectly.	Check battery polarity.
	Radio interference / Shielding.	Ensure remote is positioned away from metal objects and that aerial on motor or receiver is kept straight and away from metal.
Blind going in wrong direction	Receiver distance is too far from remote.	Move remote to a closer position.
	Power failure.	Check power supply to motor is connected and active.
	Varied	Re-program and return to section 3.1

SETTING LIMITS continued

UPPER Left Hand Control & Front Roll

STEP ONE
1) Press the DOWN button on the remote to lower the blind halfway down the window.
2) Press the STOP button to stop the blind moving.

STEP TWO
1) Using the provided wand, wind the wand anti-clockwise for approximately 15 revolutions.
2) Press the UP button on the remote and the blind should not move.
*If the blind does move, press the STOP button and wind the wand anti-clockwise until the blind stops.

STEP THREE
1) Turn the wand clockwise slowly, until the blind starts moving up.
2) Stop winding the wand when the desired highest position has been reached. Upper limit is now set.
*Do not press any buttons on the remote.

LOWER Left Hand Control & Front Roll

STEP ONE
1) Press the DOWN button on the remote to lower the blind halfway down the window.
2) Press the STOP button to stop the blind moving.

STEP TWO
1) Using the provided wand, wind the wand anti-clockwise for approximately 15 revolutions.
2) Press the DOWN button on the remote and the blind should not move.
*If the blind does move, press the STOP button and wind the wand anti-clockwise until the blind stops.

STEP THREE
1) Turn the wand clockwise slowly, until the blind starts moving up.
2) Stop winding the wand when the desired highest position has been reached. Upper limit is now set.
*Do not press any buttons on the remote.

ADDING A NEW REMOTE OR COPYING A CHANNEL

- 1) Press P2 on remote A, and release immediately after x 1 beep.
- 2) Press P2 on remote A, and release immediately after x 1 beep.
- 3) Press P2 on and release immediately after x3 beeps.



DELETING A CONTROLLER OR CHANNEL

- 1) Press P2 and release immediately after x 1 beep.
- 2) Press P2 and release immediately after x 1 beep.
- 3) Press STOP on and release immediately after x3 beeps.



CARE LABEL REFERENCE SHEET
 AS RECOMMENDED BY THE WINDOW COVERINGS ASSOCIATION OF AUSTRALIA INC.
www.wcaa.com.au www.nettex.com.au



<p>CARE LABEL No. 1 For use on velvet & silk fabrics. Remove hooks, rings & trims before cleaning. Gently vacuum regularly with appropriate attachment. Do not wash. Do not iron. Dry clean only @ 50 Possible shrinkage 3%</p>	<p>CARE LABEL No. 4 For use on polyester/cotton, polyester mixture & polyester fabrics, woven or knitted. Remove hooks, rings & trims before cleaning. Gently vacuum regularly with appropriate attachment. Warm hand wash. Do not bleach. Do not rub or wring. Drip dry in shade. For best results, hang curtains by their hooks to damp dry immediately. Use warm iron. Dry cleanable @ 50 Possible shrinkage 3%</p>	<p>CARE LABEL No. 7F For use on flock-type fabrics such as plush velvets. Remove hooks, rings & trims before cleaning. Regularly vacuum with appropriate attachment. Warm hand wash. Do not bleach. Do not rub or wring. Do not tumble dry. Drip dry in shade. Cool iron on reverse side of fabric. Do not steam. Do not dry clean ☉ Possible shrinkage 3%</p>
<p>CARE LABEL No. 2 For use on viscose/sateen & other fabrics which may shrink such as silk & bulky cotton fabrics. Protect against sunlight with lining or other shading devices. Remove hooks, rings & trims before cleaning. Gently vacuum regularly with appropriate attachment. Do not wash. Use warm iron. Dry clean only @ 50 Possible shrinkage 3%</p>	<p>CARE LABEL No. 8 For use on woolen fabrics, particularly scrims. Woolen fabrics must be protected against sunlight with lining and/or other shading device. Remove hooks, rings & trims before cleaning. Regularly vacuum with the appropriate attachment. Do not wash. Dry clean only @ 50 Reduce load & tumble dry at 55° Cool iron may be used. Possible shrinkage 3%</p>	<p>CARE LABEL No. 11 For use on silicon coated fabrics Regular care will minimise the need for additional cleaning. Gently vacuum with appropriate attachment. Always exercise caution when rubbing and abrasion. Remove hooks, rings and trims before cleaning. Washing: Curtains are heavy when wet. Cool to warm water (max 40°C). Mild detergent such as wool mixes recommended. Do not bleach, soak, rub or wring. Drip dry in the shade. Do not tumble dry. Hang curtains by their hooks to avoid coated sides touching. Do not use pegs. Do not fold curtains over clothes lines. Do not iron coated sides. Warm iron on fabric side only. Do not dry clean ☉. Wash only. Warm iron only. Possible shrinkage 3%</p>
<p>CARE LABEL No. 3A For use on pigment or solid coloured pigment cotton & linen fabrics. Remove hooks, rings & trims before cleaning. Gently vacuum with appropriate attachment. Warm machine wash. Do not rub or wring. Do not bleach. Do not tumble dry. Drip dry in shade. For best results hang curtains by their hooks to dry. Use warm iron lengthways. Do not dry clean ☉ Possible shrinkage 3%</p>	<p>CARE LABEL No. 8W For use on acrylic foam backed fabrics and flock coated fabrics or both man-made fibres and cotton. Regular care will minimise the need for additional cleaning. Gently vacuum with appropriate attachment. Always exercise caution when spot cleaning. Test cleaning on non-exposed surface. Avoid excessive rubbing and abrasion. CLEANING Washing: Possible shrinkage 3%. Remove hooks, rings & trims before cleaning. Curtains are heavy when wet. Professional wet cleaning recommended. DO NOT CLEAN IN DOMESTIC WASHING MACHINE. Hand wash in cool-to-warm water (max. 40°C). Mild detergents, such as wool mixes are recommended. Do not bleach, soak, rub or wring. Drip dry in shade. Do not tumble dry. Hang curtains by their hooks to avoid coated sides touching. Do not use pegs. Do not fold curtains over clothes line. Do not iron/press coated side. Warm iron/press on fabric side only. Do not dry clean ☉</p>	<p>CARE LABEL No. 9 Gently vacuum with appropriate attachment Do not wash. Do not dry clean ☉ Test inconspicuous area before spot cleaning with appropriate cleaner.</p>
<p>CARE LABEL No. 3M For use on cotton and metallic print. Remove hooks, rings & trims before cleaning. Gently vacuum regularly with appropriate attachment. Warm hand wash in synthetic detergent which does not contain enzymes or perborate. Do not bleach. Do not soak. Do not rub or wring. Drip dry in shade. For best results hang curtains by their hooks to dry. Warm iron under dry cloth. Do not dry clean ☉ Possible shrinkage 3%</p>	<p>CARE LABEL No. 7 For use on fabrics where dry cleaning is not recommended and for some acrylic mixtures and polypropylene blends which cannot be dry cleaned. Remove hooks, rings & trims before cleaning. Gently vacuum with appropriate attachment. Warm hand wash. Do not bleach. Do not rub, wring or tumble dry. Drip dry in shade. For best results hang curtains by their hooks to dry. Use cool iron. Do not steam iron. Do not dry clean ☉ Possible shrinkage 3%</p>	<p>CARE LABEL No. 10 Coated fabrics. Dry clean (or wash). For use on acrylic foam backed fabrics and flock coated fabrics of both man-made fibres and cotton. Regular care will minimise the need for additional cleaning. Gently vacuum with appropriate attachment. Always exercise caution when spot cleaning. Test cleaning on non-exposed surface. Avoid excessive rubbing and abrasion. CLEANING Washing: Possible shrinkage 3%. Remove hooks, rings & trims before cleaning. Curtains are heavy when wet. Professional wet cleaning recommended. DO NOT CLEAN IN DOMESTIC WASHING MACHINE. Hand wash in cool-to-warm water (max. 40°C). Mild detergents, such as wool mixes are recommended. Do not bleach, soak, rub or wring. Drip dry in shade. Do not tumble dry. Hang curtains by their hooks to avoid coated sides touching. Do not use pegs. Do not fold curtains over clothes line. Do not iron/press coated side. Warm iron/press on fabric side only. Do not dry clean ☉</p>