



# The Sinclair

BY MOSAIC



# A World-Class Lifestyle Address

WELLINGTON ROAD, EAST BRISBANE  
COMPLETED AUGUST 2022







Thank you for choosing to be part of  
The Sinclair by Mosaic.



Few addresses offer such a perfect combination of commanding location, luxurious design, extensive amenities, lifestyle, and convenience.

The Sinclair is a singular collection of homes that delights the senses and nurtures mind, body and soul. But more than that, it is a vibrant community.

We are incredibly proud of this landmark project and so very humbled by the overwhelmingly positive feedback from owners, stakeholders, and esteemed industry

bodies. Ultimately, there is no more meaningful measure of success than the satisfaction of those who have placed their trust in us to deliver their new home.

Of course, our commitment to you doesn't stop here. As part of our promise of enduring value, we maintain all our properties' management and caretaking post-completion, so you can rest assured that your home, and you, will be well looked after for years to come. We will always be here to assist.

Thank you for putting your trust in us. I hope you enjoy your beautiful home at The Sinclair by Mosaic.

A handwritten signature in black ink that reads "Brook".

**Brook Monahan**  
Founder & Managing Director  
Mosaic Property Group

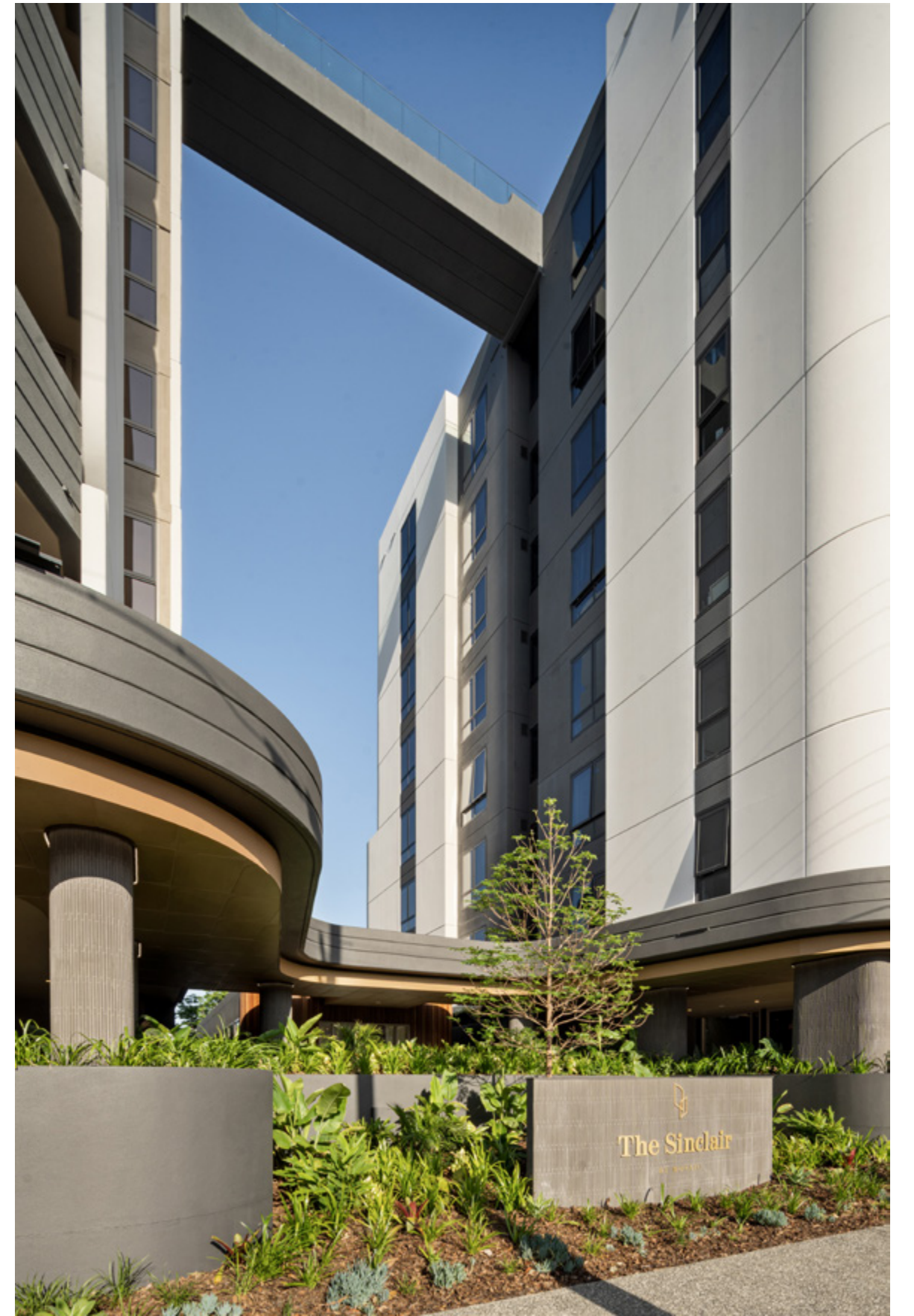








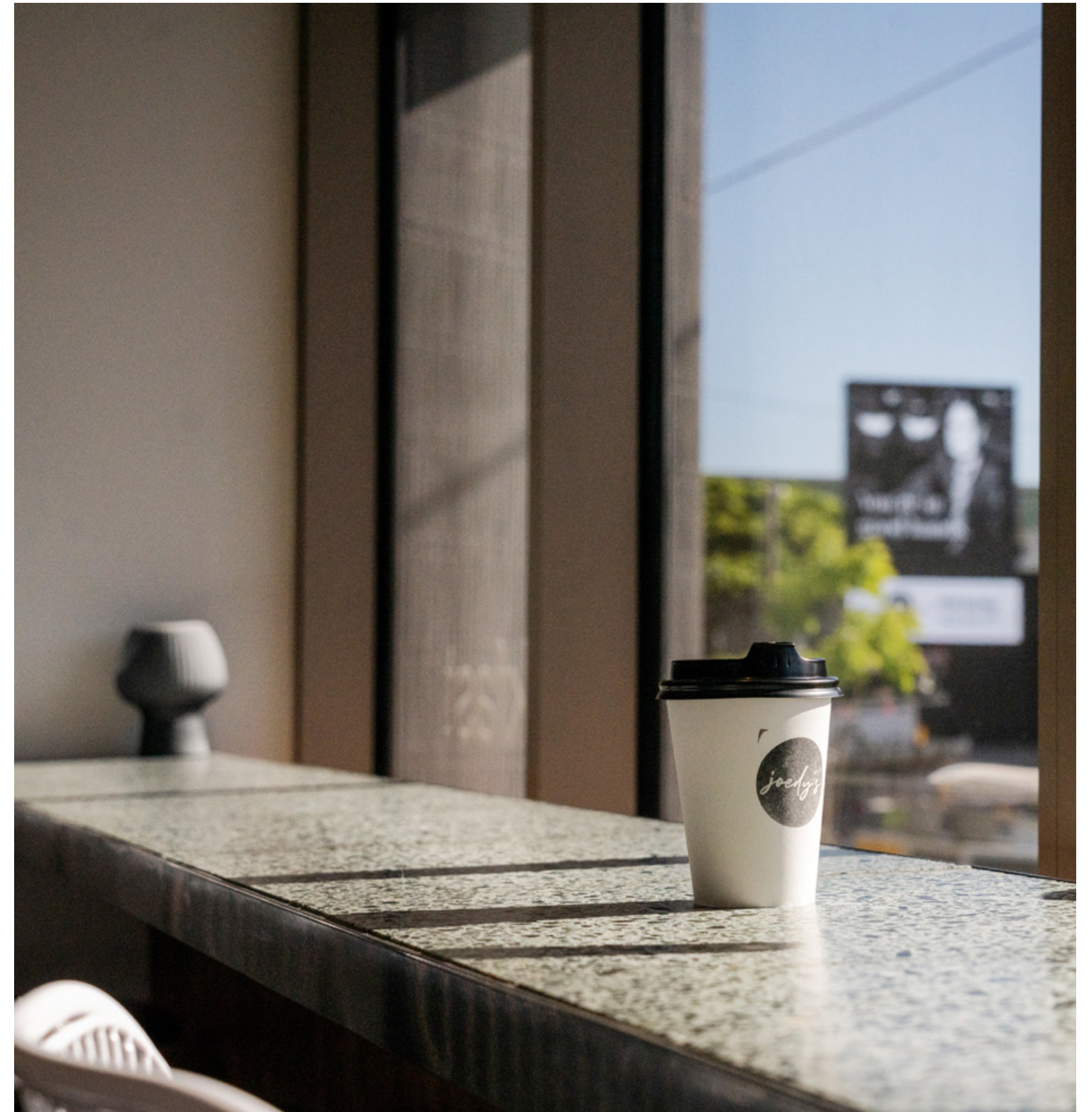






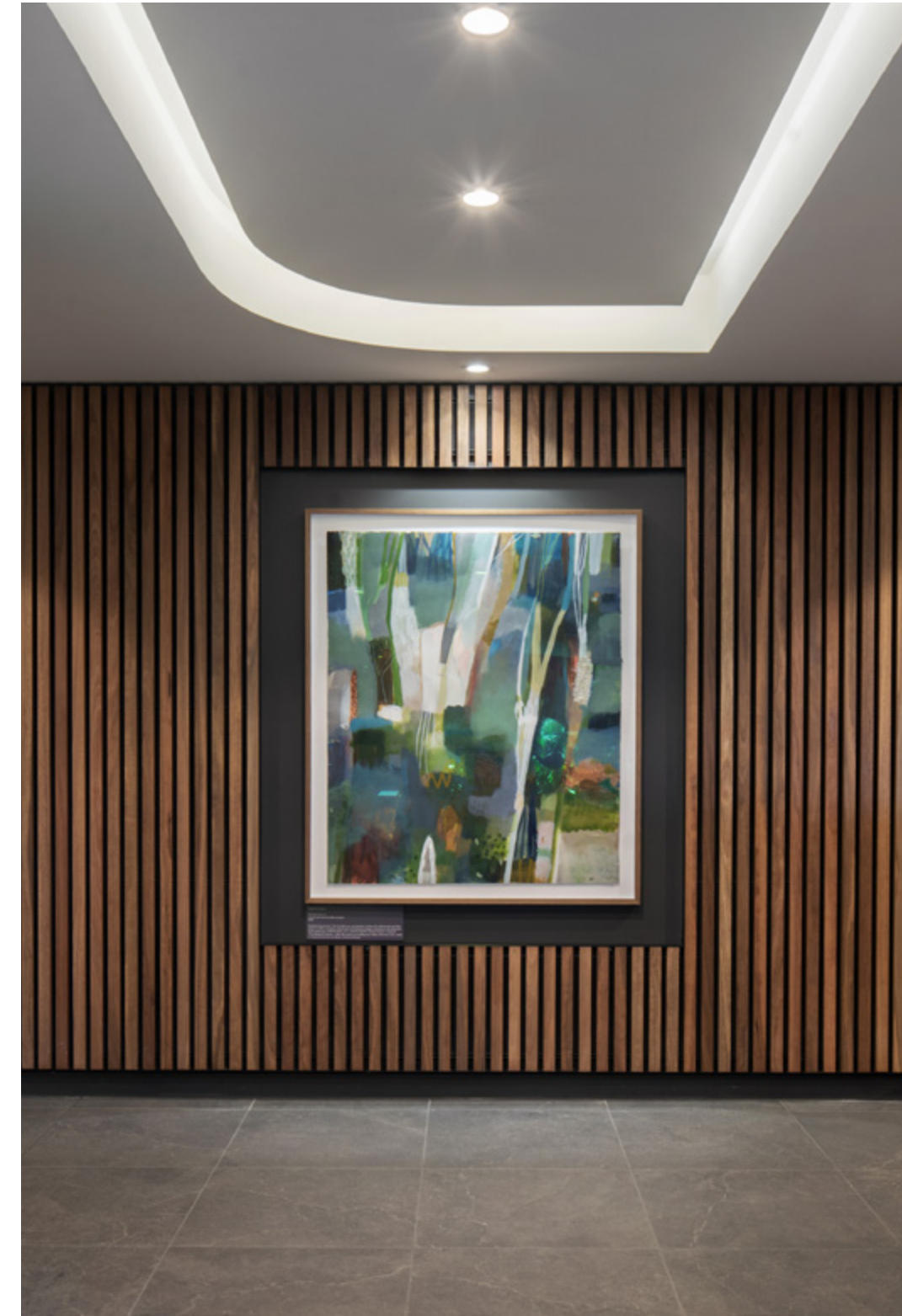
















Intelligent planning  
and premium finishes;  
a home that looks and  
feels beautiful.















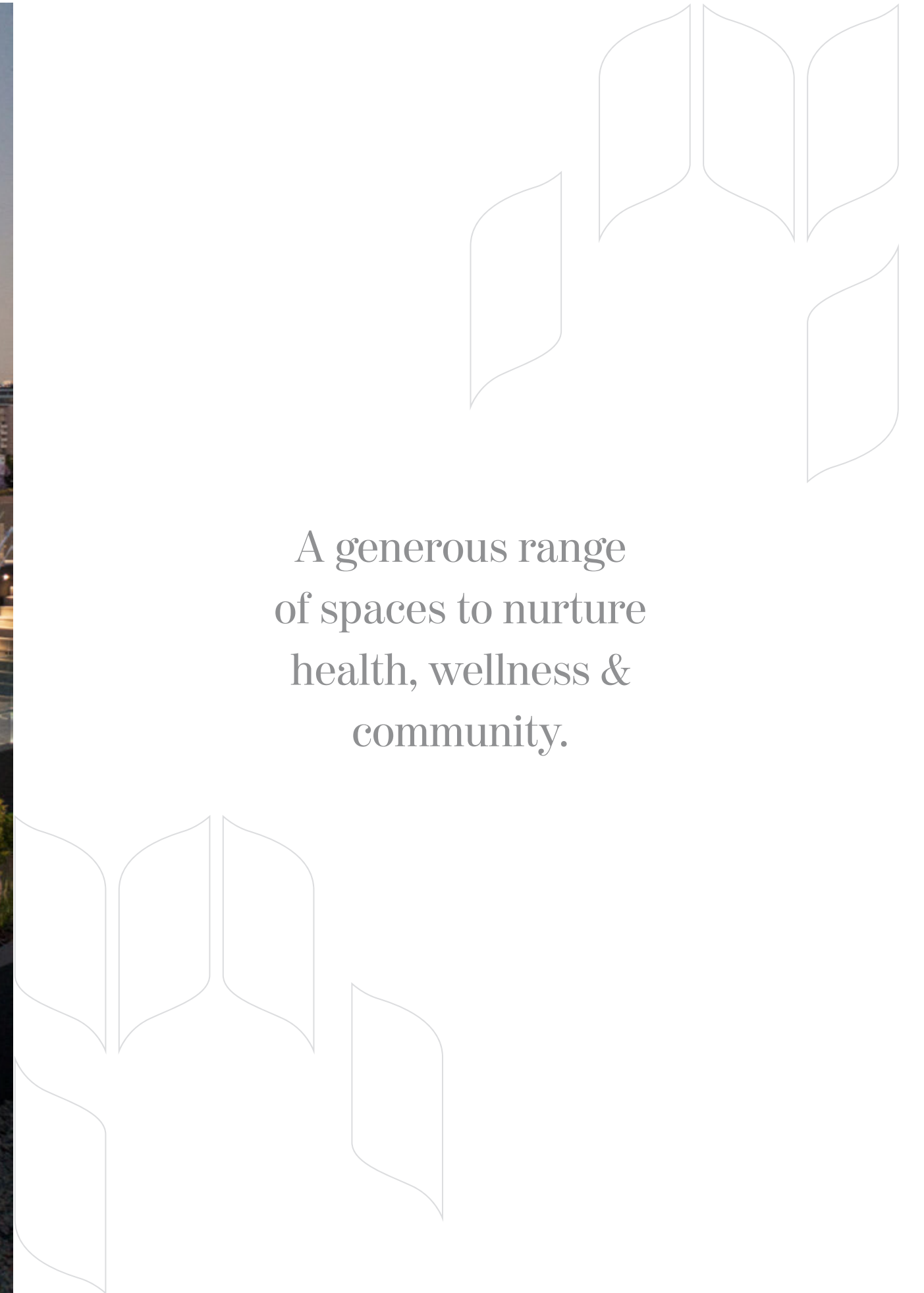
A new standard of  
inner-city living; a  
spectacular urban oasis.











A generous range  
of spaces to nurture  
health, wellness &  
community.













